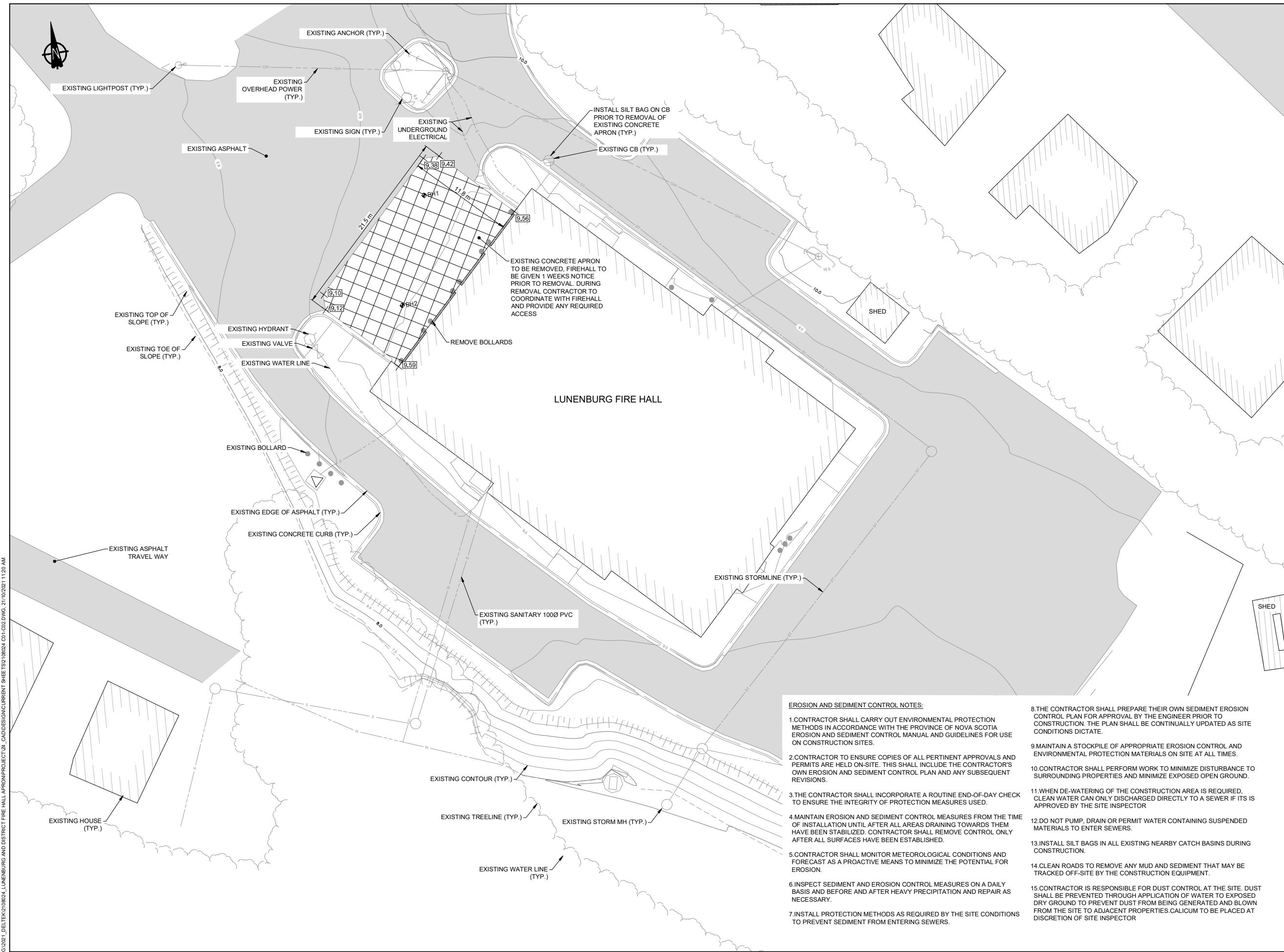


C:\2021_DELTEK\2108024_LUNENBURG AND DISTRICT FIRE HALL APRON\PROJECT\21_CADD\DESIGN\CURRENT SHEET\21-C02.DWG, 21/10/2021 11:20 AM



- NOTES**
1. ALL DRAWINGS ARE METRIC. ALL ELEVATIONS ARE GEODETIC TO CGVD2013. HORIZONTAL DISTANCES BASED ON NAD83 (CSRS 2010) MTM25.
 2. LOCATE, PROTECT, AND MAINTAIN BENCHMARKS, MONUMENTS, CONTROL POINTS, AND PROJECT REFERENCE POINTS. RE-ESTABLISH DISTURBED OR DESTROYED ITEMS AT CONTRACTOR'S EXPENSE.
 3. EXAMINE THE AREAS AND CONDITIONS UNDER WHICH SITE WORK IS PERFORMED. REPORT ANY DISCREPANCIES IN THE PLAN TO THE ENGINEER. DO NOT PROCEED WITH THE WORK UNTIL UNSATISFACTORY CONDITIONS ARE CORRECTED.
 4. REPORT DISCREPANCIES IN DRAWINGS TO THE ENGINEER FOR CLARIFICATIONS AND ADJUSTMENTS BEFORE COMMENCING WORK. ANY DEVIATIONS OR CHANGES FROM THESE DRAWINGS WITHOUT WRITTEN ACCEPTANCE OF THE ENGINEER SHALL ABSOLVE THE ENGINEER OF ANY AND ALL RESPONSIBILITY OF SAID DEVIATION AND CHANGE.
 5. WRITTEN DIMENSIONS TAKE PRECEDENCE OVER SCALED DIMENSIONS.
 6. DO NOT SUBSTITUTE MATERIALS UNLESS PRIOR APPROVAL IS OBTAINED FROM THE ENGINEER.
 7. THE CONTRACTOR SHALL ARRANGE FOR AND PAY FOR ALL TEMPORARY SERVICES SUCH AS POWER, LIGHTING, SANITARY SEWER AND WATER SUPPLY DURING CONSTRUCTION AS REQUIRED TO CONSTRUCT THE WORKS.

1	OCT 21/21	ISSUED FOR TENDER	NP	
0.A	AUG 11/21	ISSUED FOR REVIEW	NP	
NO.	DATE	REVISIONS	BY	APPR.



Englobe

PROJECT TITLE

**LUNENBURG FIRE HALL
CONCRETE APRON**

BURNSIDE N.S.

EROSION AND SEDIMENT CONTROL NOTES:

1. CONTRACTOR SHALL CARRY OUT ENVIRONMENTAL PROTECTION METHODS IN ACCORDANCE WITH THE PROVINCE OF NOVA SCOTIA EROSION AND SEDIMENT CONTROL MANUAL AND GUIDELINES FOR USE ON CONSTRUCTION SITES.
2. CONTRACTOR TO ENSURE COPIES OF ALL PERTINENT APPROVALS AND PERMITS ARE HELD ON-SITE. THIS SHALL INCLUDE THE CONTRACTOR'S OWN EROSION AND SEDIMENT CONTROL PLAN AND ANY SUBSEQUENT REVISIONS.
3. THE CONTRACTOR SHALL INCORPORATE A ROUTINE END-OF-DAY CHECK TO ENSURE THE INTEGRITY OF PROTECTION MEASURES USED.
4. MAINTAIN EROSION AND SEDIMENT CONTROL MEASURES FROM THE TIME OF INSTALLATION UNTIL AFTER ALL AREAS DRAINING TOWARDS THEM HAVE BEEN STABILIZED. CONTRACTOR SHALL REMOVE CONTROL ONLY AFTER ALL SURFACES HAVE BEEN ESTABLISHED.
5. CONTRACTOR SHALL MONITOR METEOROLOGICAL CONDITIONS AND FORECAST AS A PROACTIVE MEANS TO MINIMIZE THE POTENTIAL FOR EROSION.
6. INSPECT SEDIMENT AND EROSION CONTROL MEASURES ON A DAILY BASIS AND BEFORE AND AFTER HEAVY PRECIPITATION AND REPAIR AS NECESSARY.
7. INSTALL PROTECTION METHODS AS REQUIRED BY THE SITE CONDITIONS TO PREVENT SEDIMENT FROM ENTERING SEWERS.
8. THE CONTRACTOR SHALL PREPARE THEIR OWN SEDIMENT EROSION CONTROL PLAN FOR APPROVAL BY THE ENGINEER PRIOR TO CONSTRUCTION. THE PLAN SHALL BE CONTINUALLY UPDATED AS SITE CONDITIONS DICTATE.
9. MAINTAIN A STOCKPILE OF APPROPRIATE EROSION CONTROL AND ENVIRONMENTAL PROTECTION MATERIALS ON SITE AT ALL TIMES.
10. CONTRACTOR SHALL PERFORM WORK TO MINIMIZE DISTURBANCE TO SURROUNDING PROPERTIES AND MINIMIZE EXPOSED OPEN GROUND.
11. WHEN DE-WATERING OF THE CONSTRUCTION AREA IS REQUIRED, CLEAN WATER CAN ONLY DISCHARGED DIRECTLY TO A SEWER IF ITS IS APPROVED BY THE SITE INSPECTOR
12. DO NOT PUMP, DRAIN OR PERMIT WATER CONTAINING SUSPENDED MATERIALS TO ENTER SEWERS.
13. INSTALL SILT BAGS IN ALL EXISTING NEARBY CATCH BASINS DURING CONSTRUCTION.
14. CLEAN ROADS TO REMOVE ANY MUD AND SEDIMENT THAT MAY BE TRACKED OFF-SITE BY THE CONSTRUCTION EQUIPMENT.
15. CONTRACTOR IS RESPONSIBLE FOR DUST CONTROL AT THE SITE. DUST SHALL BE PREVENTED THROUGH APPLICATION OF WATER TO EXPOSED DRY GROUND TO PREVENT DUST FROM BEING GENERATED AND BLOWN FROM THE SITE TO ADJACENT PROPERTIES. CALICUM TO BE PLACED AT DISCRETION OF SITE INSPECTOR

DRAWING TITLE

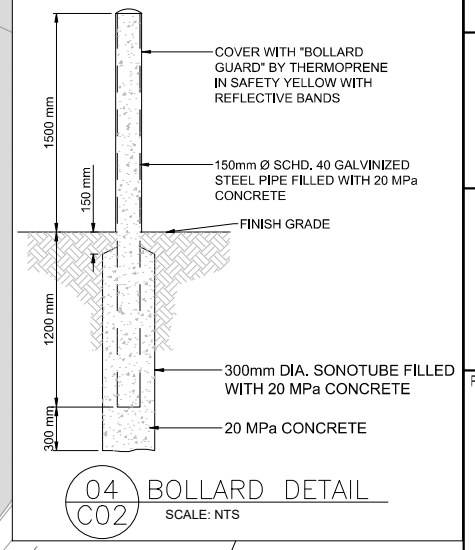
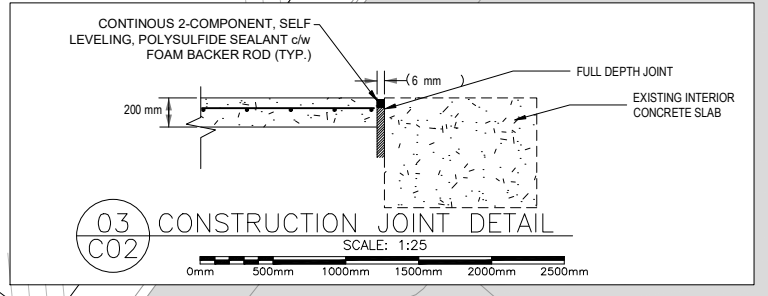
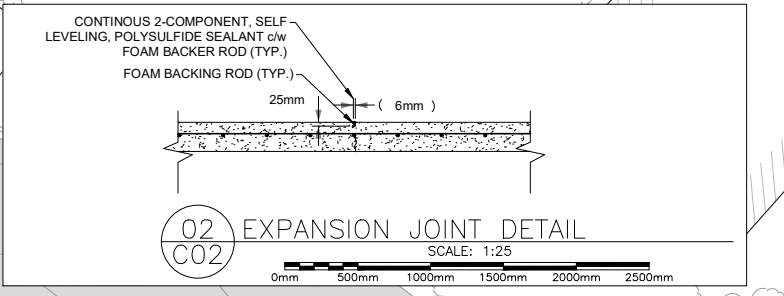
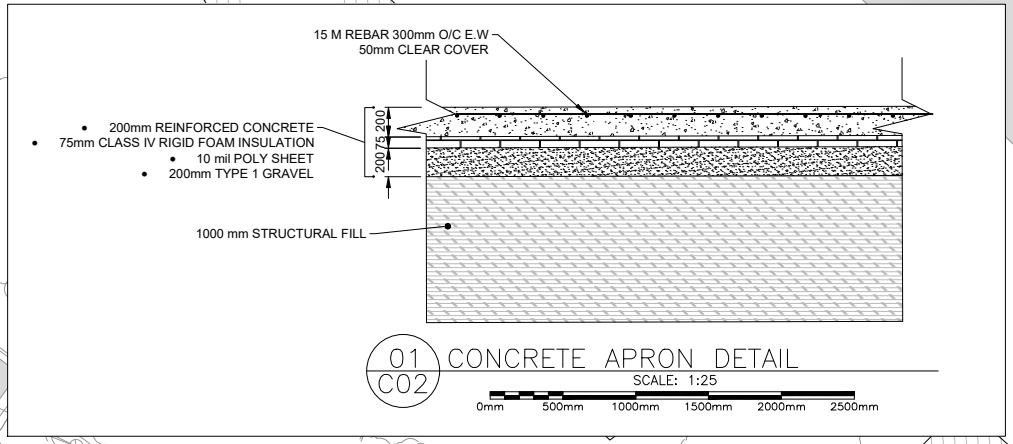
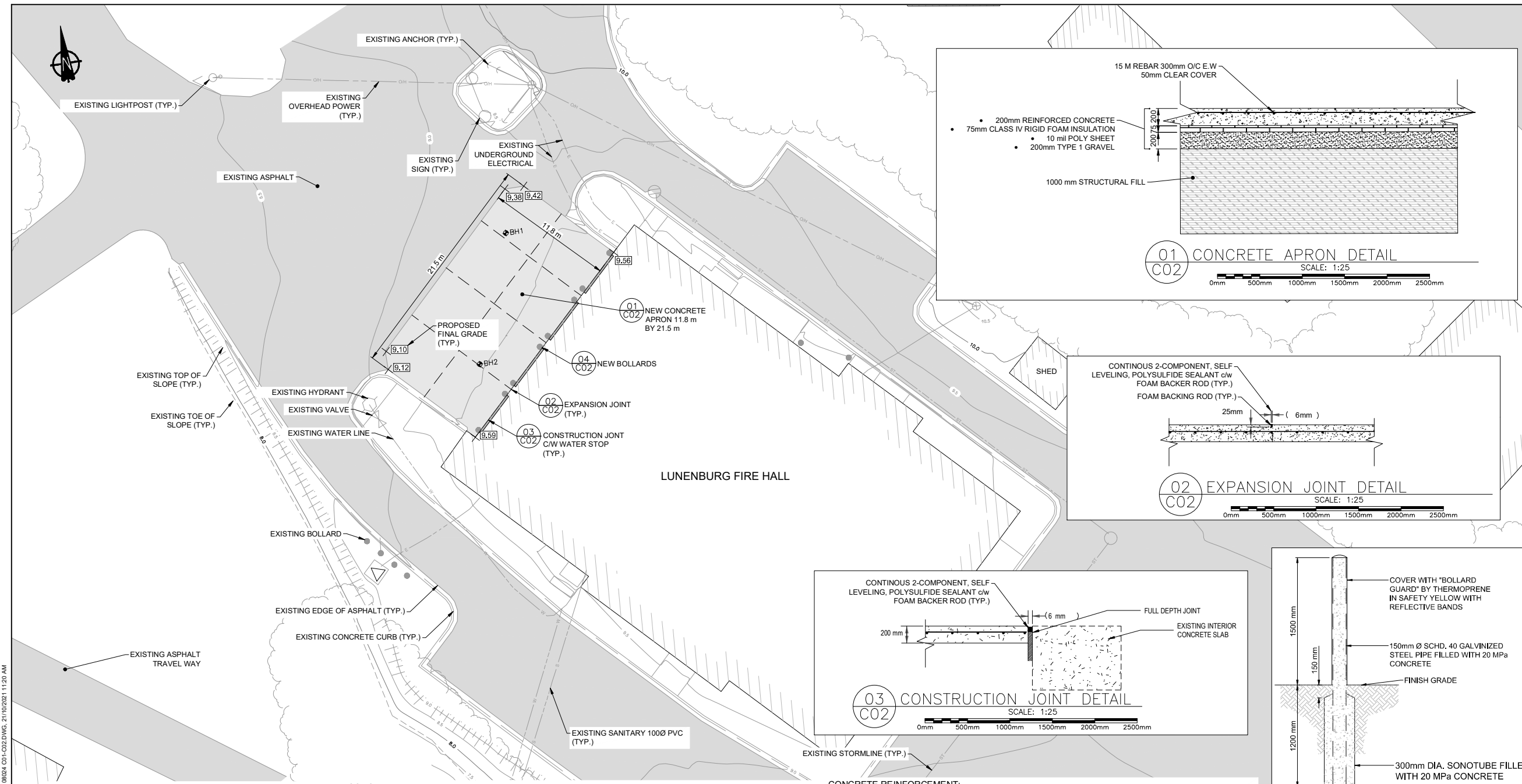
**REMOVALS
EROSION
AND
SEDIMENTATION
CONTROL**

Scale
2m 0 4m
(1:200 FULL SCALE)

Drawn By	TL	Design By	NP
Checked By	TV	Survey By	TL
Sheet		1 of 2	

File Name
2108024 C01-C02.DWG

Drawing No.
2108024-C01



- NOTES
- DRAWINGS HAVE BEEN COMPILED FROM TOPOGRAPHIC SURVEY INFORMATION AND RECORD DRAWINGS PROVIDED BY OTHERS. NOT ALL SERVICES MAY BE SHOWN. THOSE SHOWN MAY NOT BE ACCURATE. CONTRACTOR SHALL CONFIRM EXISTING SERVICES DURING CONSTRUCTION AND EXERCISE CAUTION DURING EXCAVATION PROCEDURES. CONTRACTOR SHALL CONTACT APPROPRIATE AUTHORITY FOR LOCATION OF EXISTING UNDERGROUND UTILITIES. ANY DAMAGES MADE TO EXISTING UTILITIES SHALL BE REPAIRED AT THE CONTRACTOR'S OWN EXPENSE.
 - CONTRACTOR SHALL CONFIRM ALL CRITICAL ELEVATIONS IN THE FIELD AT THE START OF CONSTRUCTION. REPORT DISCREPANCIES TO THE ENGINEER.
 - MAINTAIN MINIMUM DISTURBANCE IN ALL AREAS.
 - ALL EXCAVATED ASPHALT AND CONCRETE SHALL HAVE A SAWCUT EDGE.
 - ALL DEMOLITION WASTE SHALL BE DISPOSED OF OFF-SITE AT LOCATIONS APPROVED BY THE SITE INSPECTOR AND PER MANITOBA ENVIRONMENTAL REGULATIONS.
 - CONTRACTOR SHALL RESTORE ALL AREAS DISTURBED TO A CONDITION EQUAL TO OR BETTER THAN EXISTED BEFORE CONSTRUCTION.
 - FINISHED GRADES SHALL BE AS INDICATED ON THE DRAWINGS. ONCE CONSTRUCTION IS COMPLETE, ALL SURFACES SHALL HAVE POSITIVE DRAINAGE WITHOUT PONDING.

01	AUG 11/21	ISSUED FOR REVIEW	NP	
0A	AUG 11/21	ISSUED FOR REVIEW	NP	
NO.	DATE	REVISIONS	BY	APPR.



PROJECT TITLE
**LUNENBURG FIRE HALL
CONCRETE APRON**

BURNSIDE N.S.
DRAWING TITLE
**CONCRETE
APRON
GRADING AND
DETAILS**

Scale	Drawn By	Design By
2m 0 4m (1:200 FULL SCALE)	NP	NP
	Checked By	Survey By
	TV	TL
	Sheet	2 of 2

File Name
2108024 C01-C02.DWG
Drawing No.
2108024-C02

- STRUCTURAL NOTES:**
- DEFINITION**
ENGINEER SHALL MEAN THE OWNER'S DESIGNATED REPRESENTATIVE.
- GENERAL**
- CHECK ALL DIMENSIONS WITH CIVIL DRAWINGS AND REPORT DISCREPANCIES TO THE ENGINEER PRIOR TO COMMENCEMENT OF WORK.
 - COORDINATE WORK WITH CIVIL DRAWINGS AND REPORT ANY INCONSISTENCIES TO THE ENGINEER PRIOR TO PROCEEDING WITH THE WORK.
 - ALL WORK SHALL BE CARRIED OUT IN ACCORDANCE WITH THE LATEST EDITION OF THE NATIONAL BUILDING CODE OF CANADA 2019 ALBERTA EDITION, WITH USER'S GUIDE - NBC STRUCTURAL COMMENTARIES, CANADIAN CONSTRUCTION SAFETY CODE AND ALL REGULATIONS AS SET OUT BY LOCAL AUTHORITIES HAVING JURISDICTION.
 - SUBSTITUTION FROM SPECIFIED PRODUCTS AND MATERIALS MUST BE APPROVED BY THE ENGINEER.
 - SHOP DRAWINGS SHALL BE STAMPED BY AN ENGINEER LICENSED TO PRACTICE IN THE PROVINCE OF ALBERTA AND SHALL BE SUBMITTED AS PER THE SPECIFICATION.

- CONCRETE**
- ALL CONCRETE WORK SHALL BE COMPLETED TO THE REQUIREMENTS OF CSA A23.1-19/A23.2-19 EXCEPT AS SPECIFIED OR NOTED.
 - REINFORCING STEEL, EMBEDDED PARTS, ANCHOR BOLTS, DOWELS, WATER STOPS, ETC., SHALL BE SECURED IN POSITION PRIOR TO PLACING CONCRETE.
 - CONSTRUCTION JOINTS:
 - LOCATION OF CONSTRUCTION JOINTS, OTHER THAN INDICATED ON DRAWINGS, SHALL BE FORWARDED TO ENGINEER FOR REVIEW AND ACCEPTANCE
 - UNLESS NOTED OTHERWISE CONSTRUCTION JOINTS DETAILED WITHOUT A KEY SHALL HAVE A ROUGHENED SURFACE.
 - CONCRETE CLASS: C1
 - MAXIMUM WATER TO CEMENTING MATERIALS RATIO = 0.40.
 - MINIMUM SPECIFIED COMPRESSIVE STRENGTH = 35MPa AT 28 DAYS.
 - AIR CONTENT RANGE = 4-7%.
 - NOMINAL MAXIMUM SIZE OF AGGREGATE TO BE 20mm (3/4") UNLESS NOTED OTHERWISE.
 - DO NOT ADD WATER TO CONCRETE ON SITE.
 - CONVEY CONCRETE FROM TRUCK TO FINAL LOCATION BY METHOD WHICH WILL PREVENT SEPARATION OR LOSS OF MATERIAL. MAXIMUM FREE FALL NOT TO EXCEED 1.5m (5'-0"). CONSOLIDATE CONCRETE USING MECHANICAL VIBRATORS.
 - PLACE CONCRETE AS CLOSE AS POSSIBLE TO FINAL LOCATION TO AVOID SEGREGATION. VIBRATE ALL CONCRETE.
 - ALL CONSTRUCTION JOINTS SHALL BE SEALED USING CONTINUOUS 2-COMPONENT APPLICATION TO BE IN ACCORDANCE WITH MANUFACTURER'S WRITTEN RECOMMENDATIONS AND INSTRUCTIONS.

- CONCRETE REINFORCEMENT:**
- STRUCTURAL CONCRETE MATERIALS, TESTING AND WORKMANSHIP TO CONFORM TO CSA STANDARD A23.1-19 / A23.2-19.
 - REINFORCING STEEL TO BE DEFORMED NEW BILLET STEEL CONFORMING TO CSA G30.18-09(R2019) GRADE 400.
 - UNLESS NOTED OTHERWISE REINFORCING STEEL TO HAVE A MINIMUM CLEAR COVER AS FOLLOWS CONCRETE CAST IN AGAINST FILL AND PERMANENTLY EXPOSED 75mm CONCRETE CAST AGAINST FORMS EXPOSED TO EARTH 50mm.
 - UNLESS NOTED OTHERWISE REINFORCING STEEL TO BE SPLICED AS FOLLOWS:
 - SPLICES TO BE TENSION LAP SPLICES, CLASS "B" U.N.O.
 - NO MORE THAN 50% OF REINFORCING TO BE SPLICED AT ANY GIVEN LOCATION.
 - REINFORCING STEEL TO BE REVIEWED BY ENGINEER PRIOR TO CLOSING FORMS.
 - CONCRETE TO BE PLACED IN DRY WEATHER.
 - ALL CORNERS AND INTERSECTIONS TO HAVE CORNER BARS, SAME SIZE AND SPACING AS MAIN BARS. PROVIDE TENSION LAP WITH MAIN BARS.
 - SUBMIT REINFORCING STEEL SHOP DRAWINGS FOR REVIEW PRIOR TO FABRICATION.
 - CONTRACTOR IS RESPONSIBLE FOR DESIGN OF CONCRETE FORMWORK TO CAN/CSA-S269.3-M92 (R2013) ALSO FALSEWORK AND FORMWORK TO S269.1-16.

G:\2021\DELTEK\2108024_LUNENBURG AND DISTRICT FIRE HALL\APRONPROJECT\21_CADD\DESIGN\CURRENT SHEET\2108024_C01-C02.DWG, 21/10/2021 11:20 AM