



PELHAM STREET RECONSTRUCTION

LOCATION: LUNENBURG, NOVA SCOTIA

CLIENT: TOWN OF LUNENBURG

JOB NUMBER: 322005

DATE: JULY 29, 2025

RE-ISSUED FOR TENDER

DRAWING LIST

CIVIL

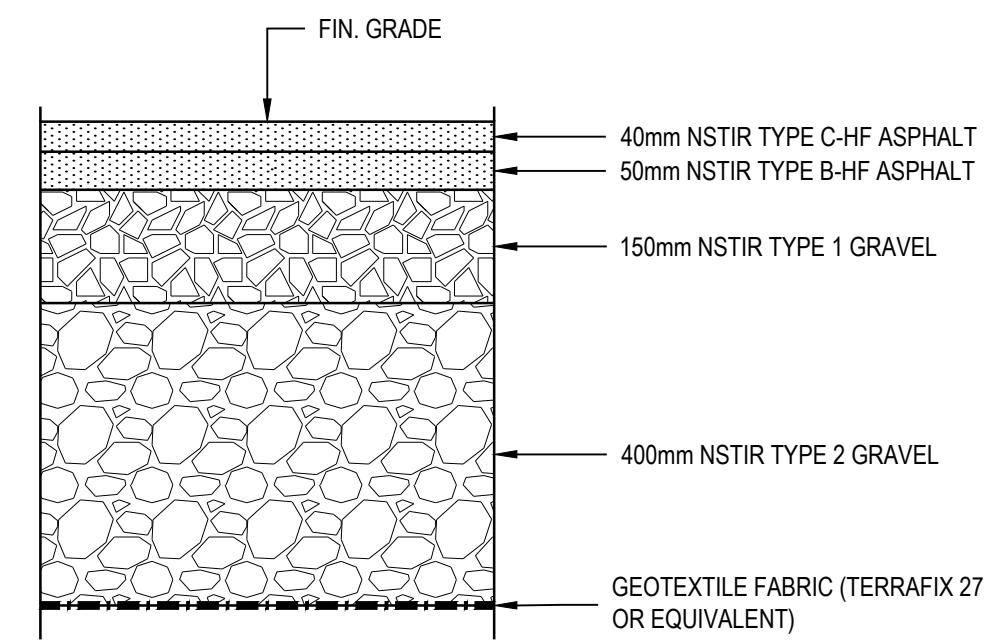
C-001	NOTES AND DETAILS
C-101	EXISTING CONDITIONS AND REMOVALS
C-102	PLAN AND PROFILE NEW SANITARY SEWER (STA. 0+000 TO 0+165)
C-103	PLAN AND PROFILE NEW STORM SEWER (STA. 0+000 TO 0+032)
C-104	NEW SITE GRADING PLAN

GENERAL NOTES:

- THIS PROJECT IS BEING SPLIT INTO TWO PHASES. PHASE 1 INVOLVES ALL WORK FROM KING STREET TO THE EAST SIDE OF THE INTERSECTION WITH PRINCE STREET, AND PHASE 2 INVOLVES THE REMAINDER OF WORK TO HOPSON STREET, AS INDICATED IN THESE DRAWINGS. PHASING IS CLEARLY DELINEATED IN THE PLAN AND PROFILE DRAWINGS. SOME DETAILS PERTAIN TO BOTH PHASES.
- UNLESS INDICATED OTHERWISE, ALL WORK SHALL BE COMPLETED IN ACCORDANCE WITH THE NOVA SCOTIA ROAD BUILDERS ASSOCIATION STANDARD SPECIFICATIONS FOR MUNICIPAL SERVICES 2023 EDITION.
- ALL DIMENSIONS INDICATED ON PLANS ARE IN METERS. ALL DETAILS ARE IN MILLIMETERS. PIPE SIZES INDICATED ARE IN MILLIMETERS.
- LOCATE, PROTECT, AND MAINTAIN BENCH MARKS, MONUMENTS, CONTROL POINTS, AND PROJECT REFERENCE POINTS. RE-ESTABLISH DISTURBED OR DESTROYED ITEMS AT CONTRACTOR'S EXPENSE.
- EXAMINE THE AREAS AND CONDITIONS UNDER WHICH SITE WORK IS PERFORMED. REPORT ANY DISCREPANCIES IN THE PLAN TO THE CONSULTANT. DO NOT PROCEED WITH THE WORK UNTIL UNSATISFACTORY CONDITIONS ARE CORRECTED.
- REPORT DISCREPANCIES IN DRAWINGS TO THE OWNER REPRESENTATIVE FOR CLARIFICATIONS AND ADJUSTMENTS BEFORE COMMENCING WORK. ANY DEVIATIONS OR CHANGES FROM THESE DRAWINGS WITHOUT WRITTEN ACCEPTANCE OF THE CONSULTANT SHALL ABSOLVE THE OWNER REPRESENTATIVE OF ANY AND ALL RESPONSIBILITY OF SAID DEVIATION AND CHANGE.
- WRITTEN DIMENSIONS TAKE PRECEDENCE OVER SCALED DIMENSIONS.
- DO NOT SUBSTITUTE MATERIALS UNLESS PRIOR APPROVAL IS OBTAINED FROM THE OWNER REPRESENTATIVE.
- THE CONTRACTOR SHALL ARRANGE FOR AND PAY FOR ALL TEMPORARY SERVICES SUCH AS POWER, SANITARY SEWER AND WATER SUPPLY DURING CONSTRUCTION AS REQUIRED TO CONSTRUCT THE WORKS.
- DRAWINGS HAVE BEEN COMPILED FROM INFORMATION PROVIDED BY OTHERS. NOT ALL SITE FEATURES OR UTILITIES MAY BE SHOWN. THOSE SHOWN MAY NOT BE ACCURATE. CONTRACTOR SHALL CONFIRM EXISTING SITE FEATURES AND UTILITIES DURING CONSTRUCTION. CONTRACTOR SHALL CONTACT APPROPRIATE AUTHORITY FOR LOCATION OF EXISTING UTILITIES. CONTRACTOR SHALL REPAIR ANY DAMAGE TO UTILITIES AT THE CONTRACTOR'S OWN EXPENSE. CONTRACTOR SHALL COMPLETE ITS OWN LOCATES AND SATISFY ITSELF OF EXISTING SITE CONDITIONS.
- CONTRACTOR SHALL OBTAIN ALL NECESSARY PERMITS REQUIRED TO PERFORM THE WORK AND COMPLY WITH THE PERMIT REQUIREMENTS AND CONDITIONS.
- INSTALL TEMPORARY CONSTRUCTION SIGNAGE AND PROVIDE TRAFFIC CONTROL IN ACCORDANCE WITH THE MANUAL OF UNIFORM TRAFFIC CONTROL DEVICES (MUTCD) OF CANADA (LATEST EDITION) AND IN ACCORDANCE WITH HRM REQUIREMENTS.
- CONTRACTOR SHALL CONFIRM ALL CRITICAL ELEVATIONS IN THE FIELD AT THE START OF CONSTRUCTION. REPORT DISCREPANCIES TO THE OWNER REPRESENTATIVE.
- MAINTAIN MINIMUM DISTURBANCE IN ALL AREAS.
- ALL EXCAVATED ASPHALT AND CONCRETE SHALL BE MADE WITH NEAT AND STRAIGHT SAW CUTS.
- CONTRACTOR SHALL RESTORE ALL AREAS DISTURBED TO A CONDITION EQUAL TO OR BETTER THAN EXISTED BEFORE CONSTRUCTION.
- FINISHED GRADES SHALL BE AS INDICATED ON THE DRAWINGS. ONCE CONSTRUCTION IS COMPLETE, ALL SURFACES SHALL HAVE POSITIVE DRAINAGE WITHOUT PONDING.
- MAINTAIN SITE IN TIDY CONDITION FREE FROM ACCUMULATION OF WASTE PRODUCTS AND DEBRIS. UPON OBTAINING SUBSTANTIAL PERFORMANCE OF THE WORK, REMOVE SURPLUS PRODUCTS, TOOLS, MACHINERY, AND EQUIPMENT FROM THE SITE. COMPLETION OF CLEANUP IS REQUIRED FOR TOTAL PERFORMANCE OF THE WORK.
- PROVIDE A RECORD INFORMATION PACKAGE CONSISTING OF REDLINE DRAWING MARK-UPS AND A FINAL SURVEY. FINAL SURVEY TO BE COMPLETED BY CONSTRUCTION SURVEYORS AT THE CONTRACTOR'S OWN EXPENSE AND WILL INCLUDE LOCATIONS OF ALL ABOVE AND BELOW GRADE INFRASTRUCTURE CONSTRUCTED. SUBMITTAL OF THE FINAL SURVEY WILL INCLUDE AN AUTOCAD FILE AND RAW POINTS DATA.

TOPOGRAPHIC NOTES:

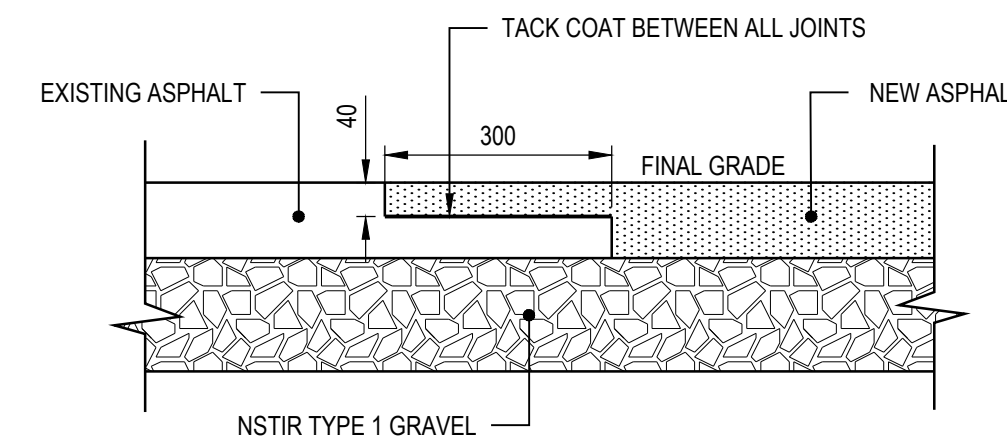
- CONTOUR DATA IS IN METERS. EXISTING CONTOURS SHOWN AT INTERVALS OF 0.25m.
- TOPOGRAPHIC SURVEY COMPLETED BY WNL (WILLIAMS NUTTER LTD.) IN APRIL OF 2024.
- BEARINGS ARE GRID DERIVED FROM GNSS OBSERVATION TO N.S.H.P.N. 216725, REFERENCED TO THE NOVA SCOTIA 3rd MODIFIED TRANSVERSE PROJECTION (ZONE 5), CENTRAL MERIDIAN 64° 30' W; BASED ON THE HORIZONTAL REFERENCE FRAME NAD83 (CSRS), EPOCH 2010.0.
- ELEVATIONS ARE GEODETIC, DERIVED FROM NOVA SCOTIA HIGH PRECISION NETWORK MONUMENT 216725, HAVING A PUBLISHED ELEVATION OF 1.419 METRES IN THE CANADIAN GEODETIC VERTICAL DATUM OF 2013 (CGVD 2013).



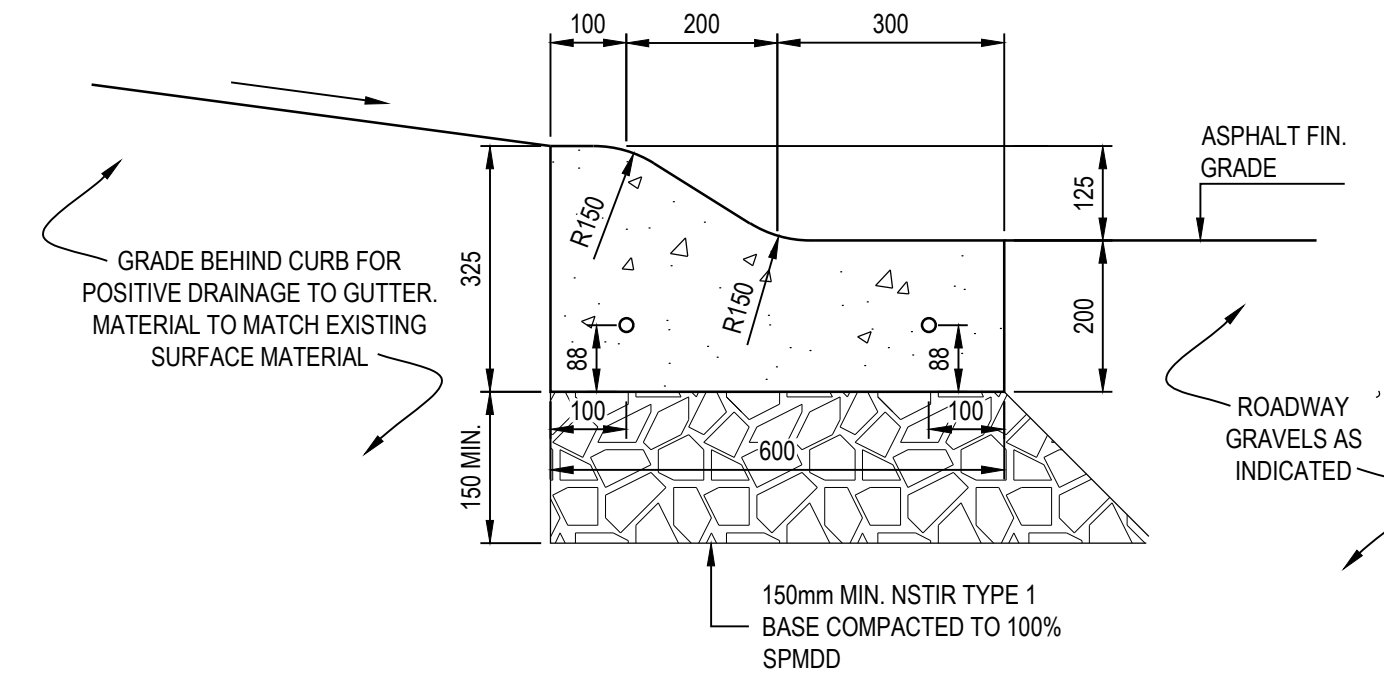
NOTES:

- THE EXISTING ROADWAY ASPHALT AND BASE GRAVELS ARE TO BE EXCAVATED, AND THE SUBGRADE COMPACTED TO 98% SPMD. A PROOF ROLL INSPECTION BY LICENSED GEOTECHNICAL PERSONNEL IS REQUIRED PRIOR TO PLACING NEW ROAD BASE GRAVELS. ANY AREAS OF UNSUITABLE MATERIAL IDENTIFIED DURING THE PROOF ROLL MUST BE REMOVED AND REPLACED WITH SURGE ROCK (MINIMUM 400mm THICK) AND/OR GEOGRID, AS DIRECTED BY THE GEOTECHNICAL ENGINEER.

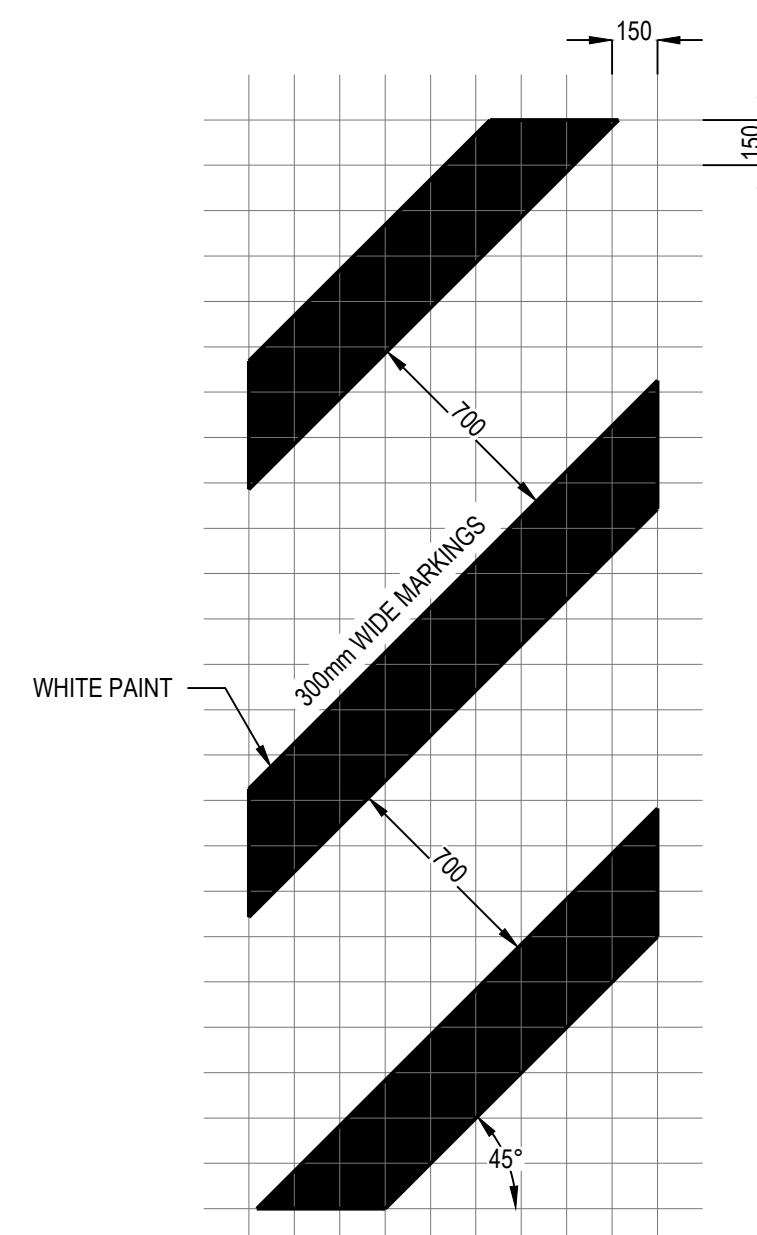
1 ASPHALT REINSTATEMENT
SCALE: NTS



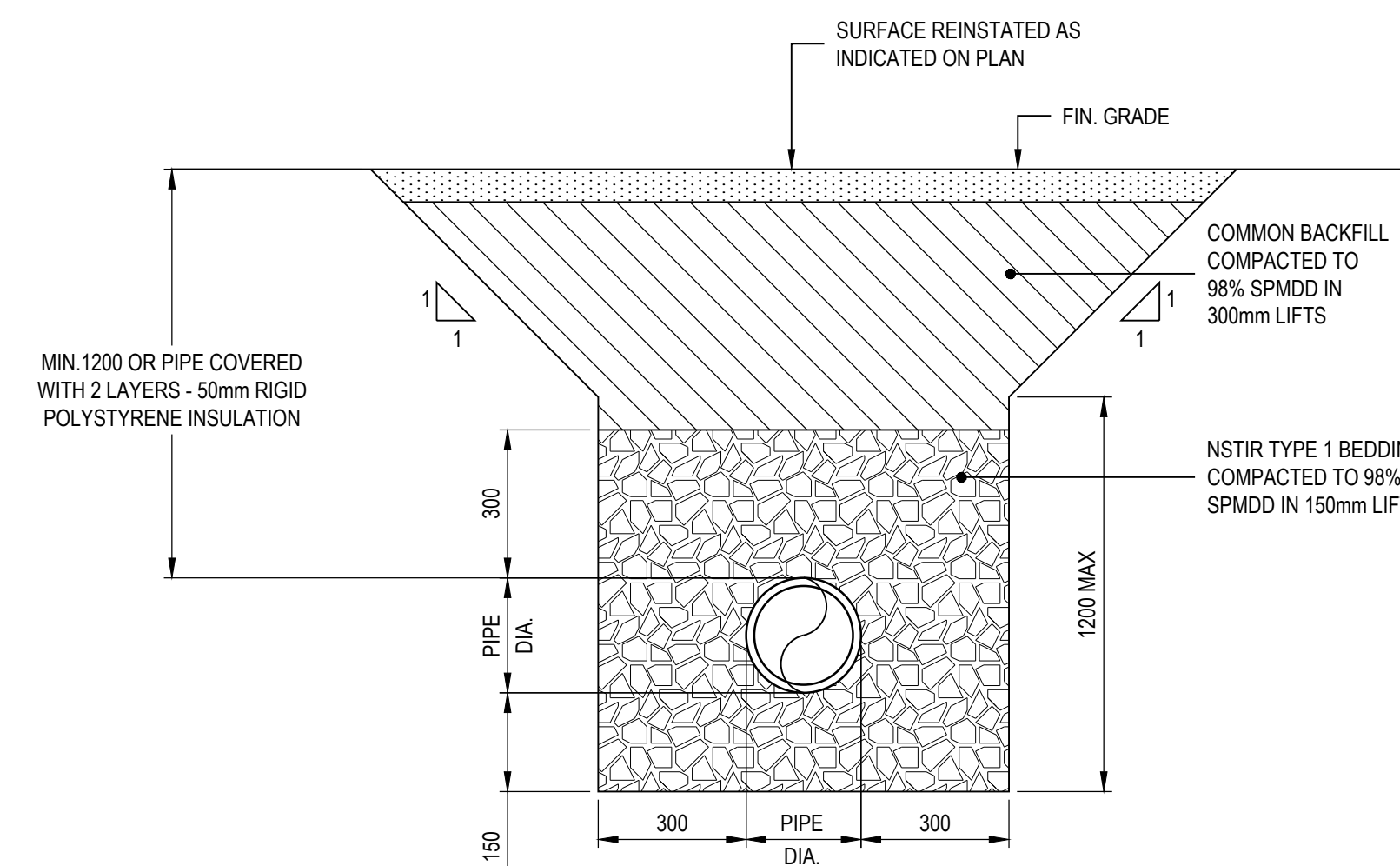
2 ASPHALT STEP JOINT
SCALE: NTS



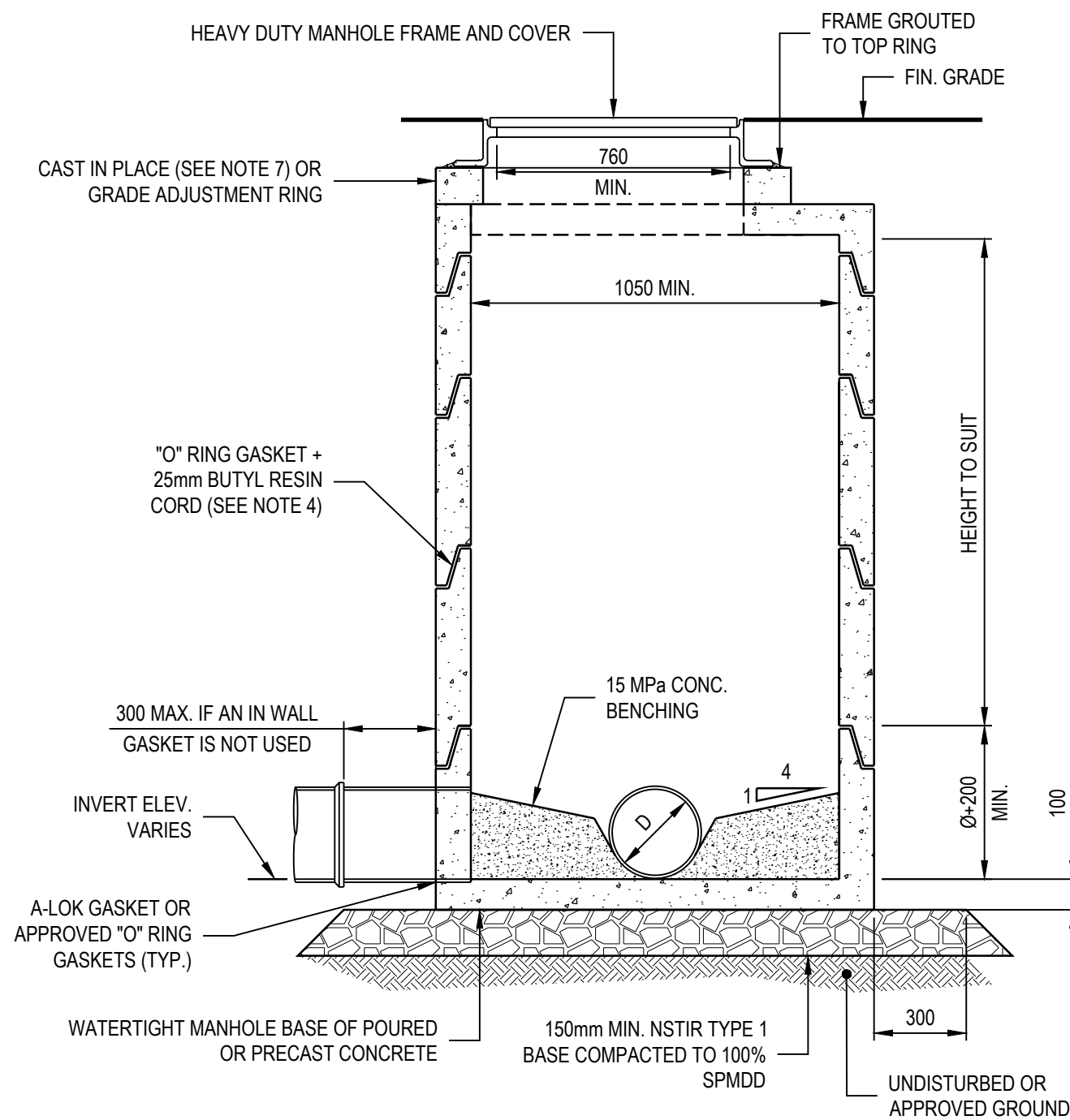
3 CONC. ROLLED CURB AND GUTTER
SCALE: NTS



4 CROSSWALK HATCHING
SCALE: NTS



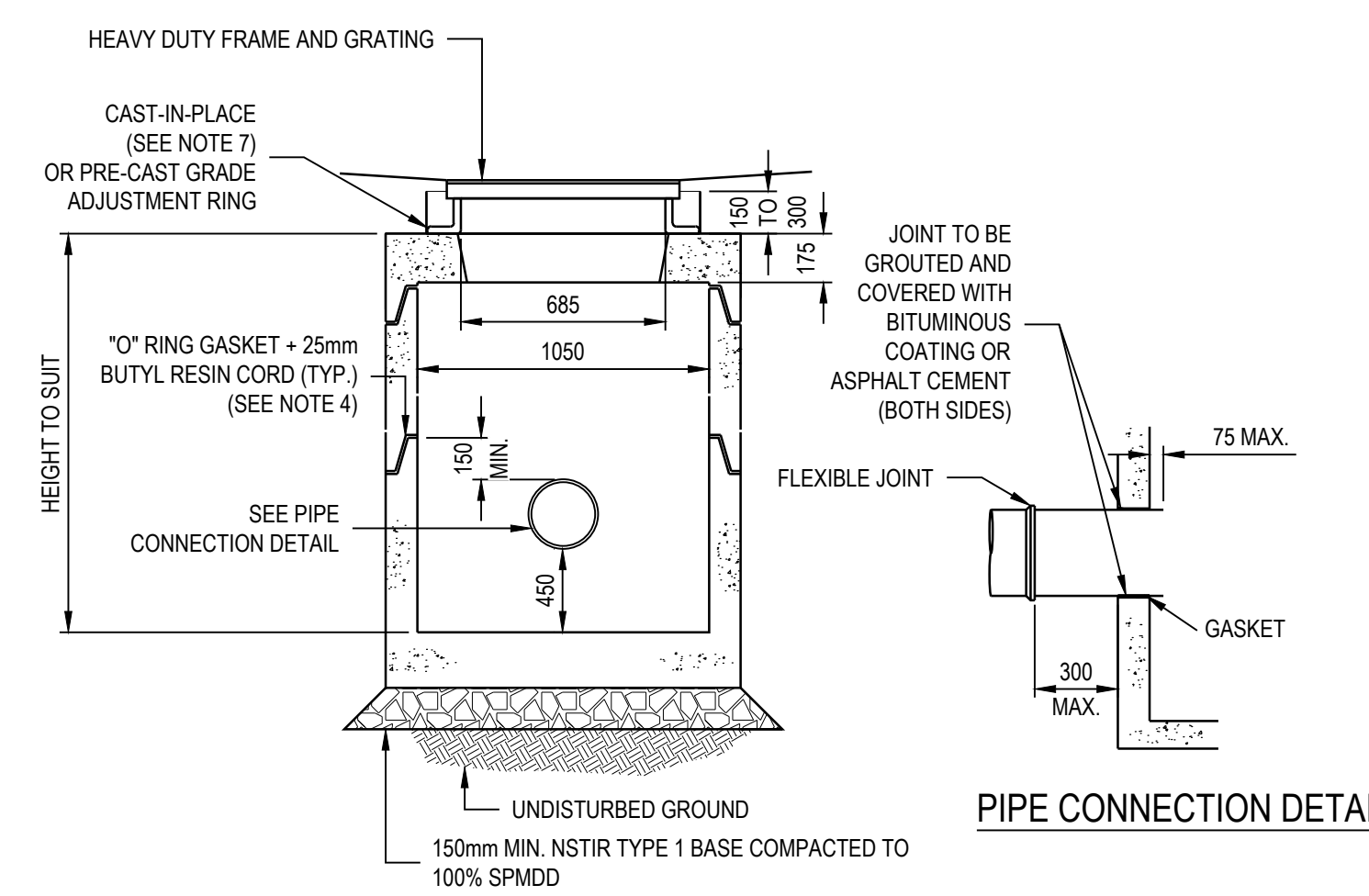
5 PIPE INSTALLATION
SCALE: NTS



6 TYP. MANHOLE
SCALE: NTS

MANHOLE & CATCH BASIN NOTES:

- WATERTIGHT SEAL RING BETWEEN SECTIONS.
- LIFT HOLES IN PRECAST SECTIONS TO BE GROUTED WITH CEMENT MORTAR PRIOR TO PLACING GRANULAR BACKFILL.
- IF FINAL GRADE ADJUSTMENT EXCEEDS 150mm IN HEIGHT, REBAR MUST BE INCORPORATED IN THE RAISED SECTION.
- IN ADDITION TO O-RING GASKETS, JOINTS IN PRECAST SECTIONS SHALL BE SEALED WITH 25mm BUTYL RESIN CORD. THE CORD SHALL BE PLACED ON THE UPPER INSIDE LEDGE OF THE JOINT PRIOR TO PLACEMENT OF THE SUBSEQUENT SECTION.
- BACKFILL SHALL BE GRANULAR TYPE 1 MATERIAL EXTENDING A MIN. OF 300mm OUTWARD FROM STRUCTURE AND VERTICALLY FROM BEDDING MATERIAL TO UNDERSIDE OF ROADBED GRAVELS.
- APPROVED "O" RING GASKETS SHALL BE THOROUGHLY CLEANED, THEN COVERED GENEROUSLY WITH LUBRICANT SPECIFIED BY THE PIPE MANUFACTURER.
- CAST IN PLACE GRADE ADJUSTMENT TO BE COMPLETED WITH AIR ENTRAINED 40 MPa CONCRETE ON AN APPROVED NON-SHRINK GROUT.



7 PRECAST CONC. CATCH BASIN
SCALE: NTS



1	RE-ISSUED FOR TENDER	JBC	2025-07-29
0	ISSUED FOR TENDER	JBC	2024-07-30
REV	DESCRIPTION	APP	DATE

PROJECT NAME:
PELHAM STREET RECONSTRUCTION

JOB LOCATION:
LUNenburg, NS

DRAWING TITLE:
NOTES AND DETAILS

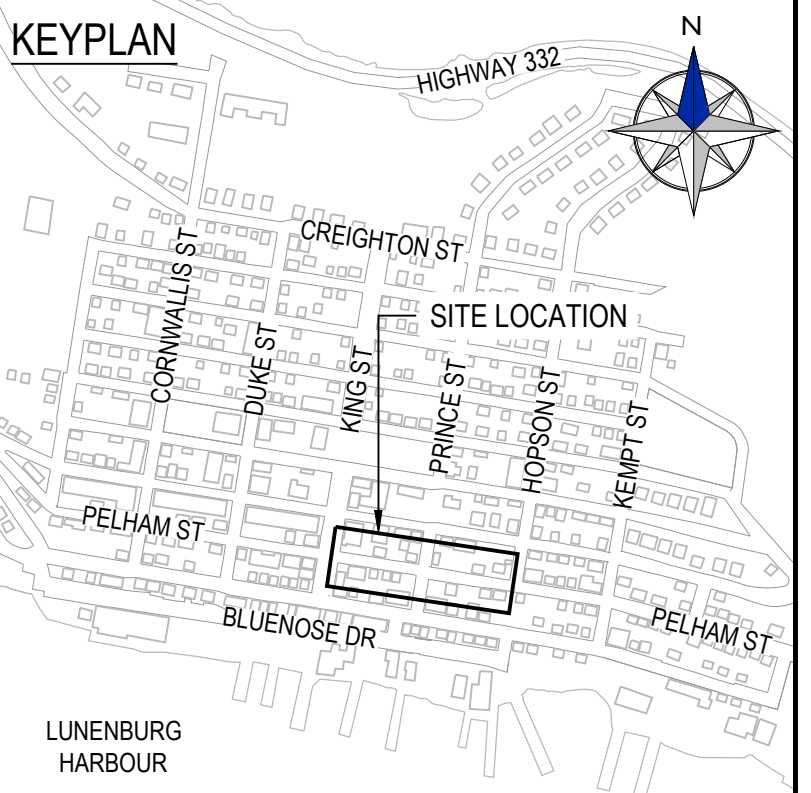
DWN BY: MMS CKD BY: ATN

DES BY: JBC SHT NO:

SCALE: AS NOTED

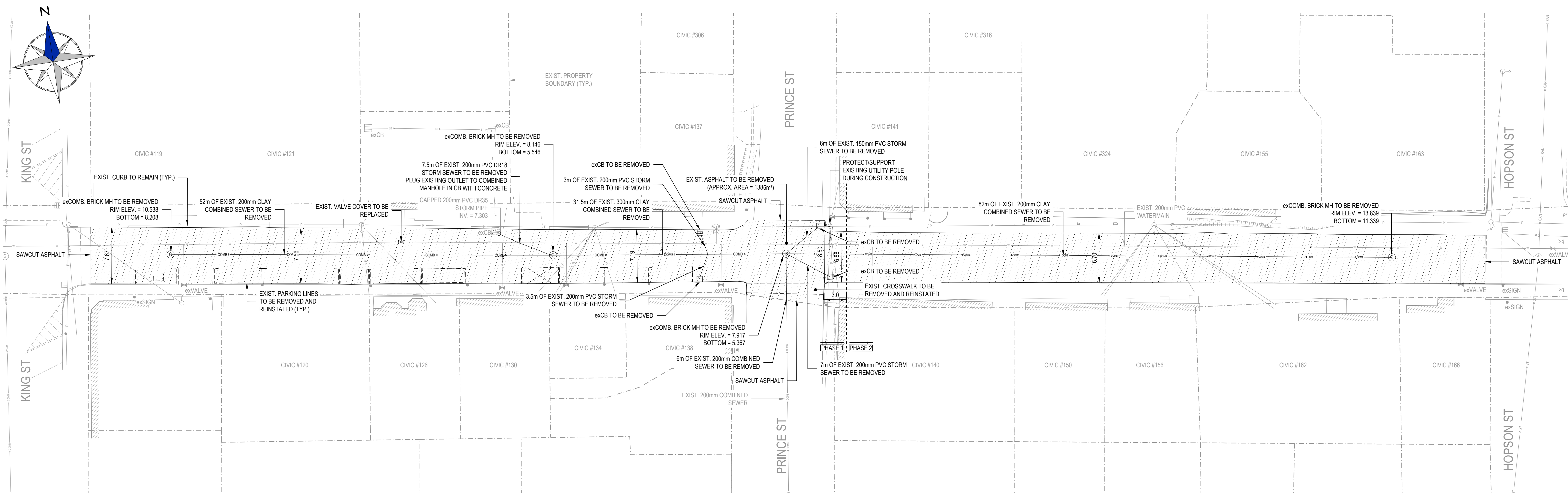
CLIENT JOB NO: EASTPOINT JOB NO: 322005
DRAWING NO: C-001 REV: 1

CLIENT NAME / LOGO:

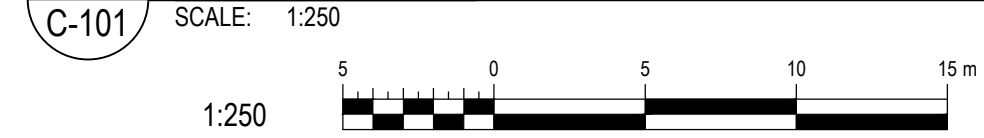


NOTES:

1. PHASE LIMIT IS TO BE 3.0m FROM EAST EDGE OF PRINCE STREET, AS INDICATED.
2. EXISTING SIDEWALK AND CURBS ALONG PELHAM STREET TO BE PROTECTED AND NOT DISTURBED DURING ROAD RECONSTRUCTION.
3. USE SHORING TO NOT UNDERMINE SIDEWALK, CURB, AND OTHER INFRASTRUCTURE THROUGHOUT STREET EXCAVATION.
4. CONTRACTOR TO PROTECT EXISTING SERVICES INDICATED TO REMAIN. IF DAMAGED DURING CONSTRUCTION, CONTRACTOR IS RESPONSIBLE TO FIX DAMAGED SERVICES.
5. ALL EXISTING SEWER AND WATER LATERAL LOCATIONS CANNOT BE CONFIRMED AND MAY NOT BE SHOWN ON DRAWINGS. CONTRACTOR TO EXERCISE CAUTION DURING EXCAVATION TO AVOID DAMAGE TO LATERALS. CONTRACTOR SHALL PROTECT ALL WATER MAIN AND LATERAL INFRASTRUCTURE DURING CONSTRUCTION. CONTRACTOR WILL BE RESPONSIBLE TO REPAIR ANY DAMAGE TO EXISTING INFRASTRUCTURE AT NO ADDITIONAL EXPENSE TO THE OWNER.
6. CONTRACTOR SHALL PROVIDE TEMPORARY SERVICES AS REQUIRED TO MAINTAIN ALL SERVICES. THOSE MAY INCLUDE TEMPORARY PIPES OR PUMPING. CONTRACTOR IS RESPONSIBLE FOR PROVIDING A PHASING PLAN PRIOR TO STARTING THE WORK DETAILING TEMPORARY WORKS.
7. DISCONNECT EXISTING SANITARY LATERALS (ASSUME 12 PER PHASE) TO EDGE OF STREET RECONSTRUCTION EXTENTS FOR RECONNECTIONS TO NEW SEWER.



1 EXISTING CONDITIONS AND REMOVALS



LEGEND

PLANIMETRY:

- BUILDING OUTLINE
- ASPHALT AREA
- CONCRETE AREA
- - - MUNICIPAL BOUNDARY
- - - TOP OF SLOPE
- - - DECORATIVE FENCE LINE
- - - TREE LINE
- TREE SINGLE
- PROTECTION BOLLARD
- ▲ SIGN

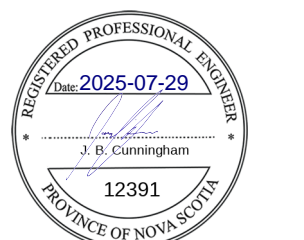
UTILITIES:

- WATER LINE
- STORM LINE
- SANITARY LINE
- COMBINED SEWER LINE
- UG STREETLIGHT LINE
- UG COMMUNICATIONS LINE
- UG GAS LINE
- VALVE BOX
- CURB STOP
- FIRE HYDRANT
- STORM MANHOLE
- STORM CATCH BASIN
- MONITORING WELL
- CLEANOUT
- COMBINED MANHOLE
- ELECT. POLE
- STREETLIGHT
- ELECT. JUNCTION BOX
- ELECT. MANHOLE

NOTE: EXISTING LINework REPRESENTED BY GREYING OUT AND NEW OR REMOVED FEATURES BOLDED BLACK

ABBREVIATIONS:

- EXIST. / ex EXISTING
- FIN. FINISH
- TYP. TYPICAL
- ELEV. ELEVATION
- INV. INVERT
- TEMP. TEMPORARY
- OH OVERHEAD
- UG UNDERGROUND
- CONC. CONCRETE
- SAN. SANITARY
- COMB. COMBINED
- MH MANHOLE
- CB CATCH BASIN



1	RE-ISSUED FOR TENDER	JBC	2025-07-29
0	ISSUED FOR TENDER	JBC	2024-07-30
REV	DESCRIPTION	APP	DATE

PROJECT NAME:
PELHAM STREET RECONSTRUCTION

JOB LOCATION:
LUNENBURG, NS

DRAWING TITLE:
EXISTING CONDITIONS AND REMOVALS

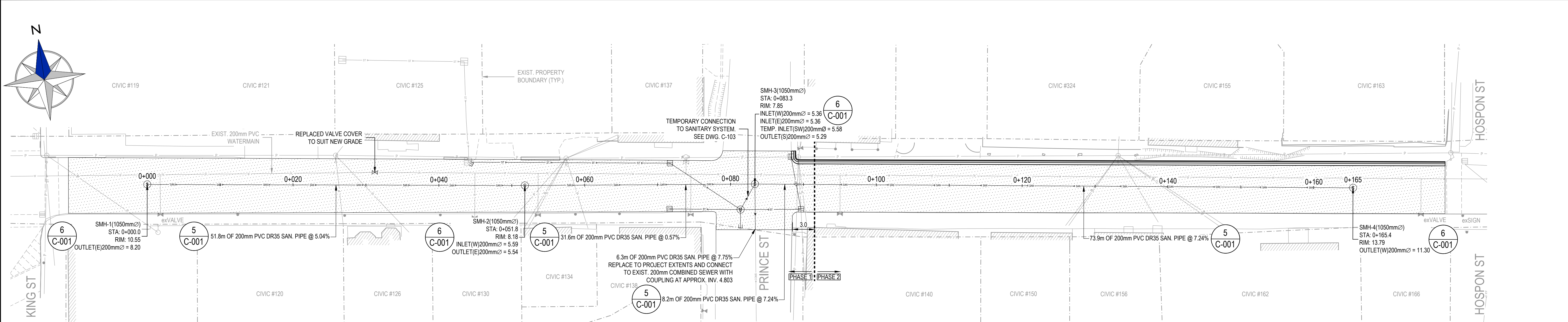
DWN BY:	MMS	CKD BY:	ATN
DES BY:	JBC	SHT NO.:	

SCALE: 1:250

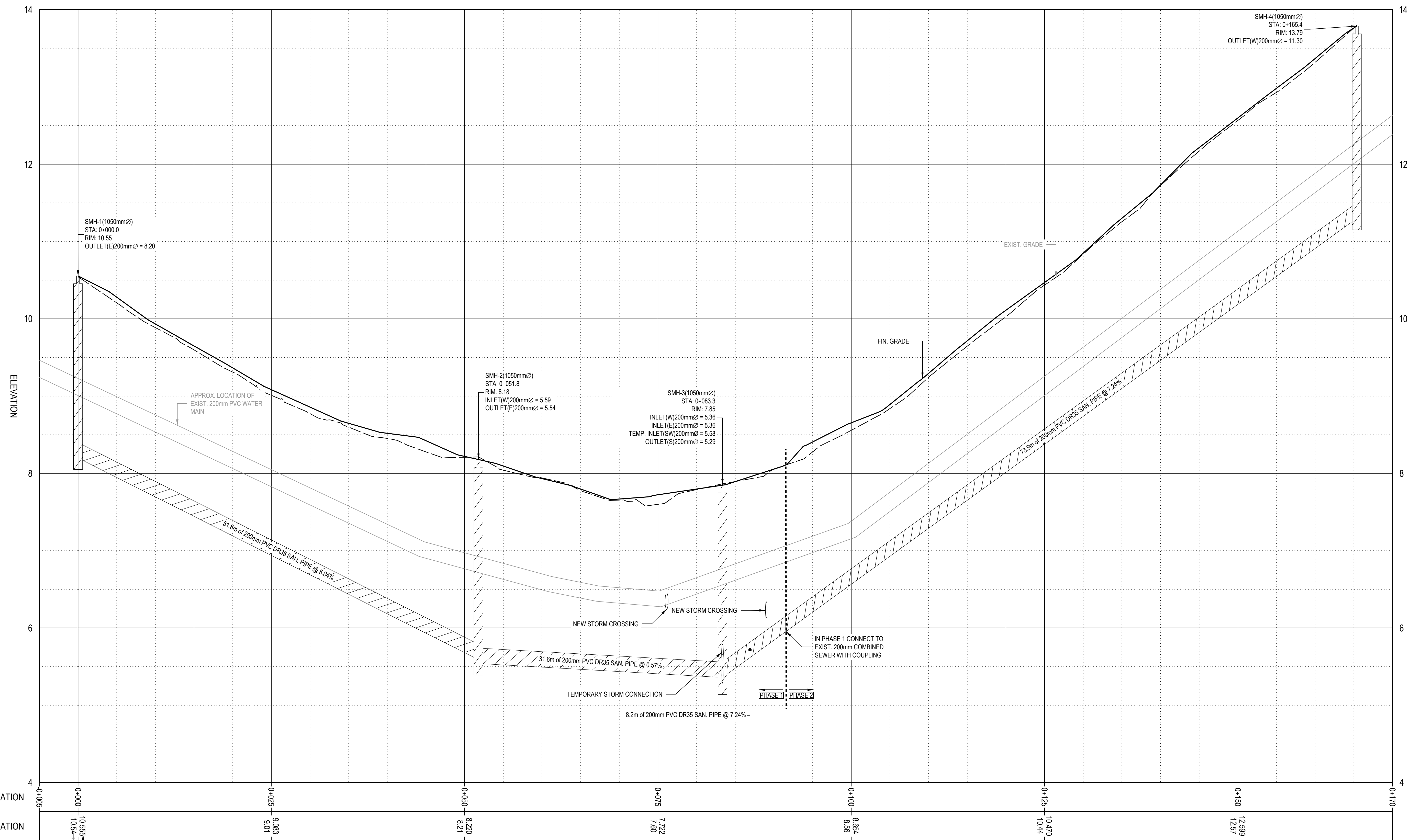
CLIENT JOB NO.: EASTPOINT JOB NO.: 322005

DRAWING NO.: C-101 REV: 1

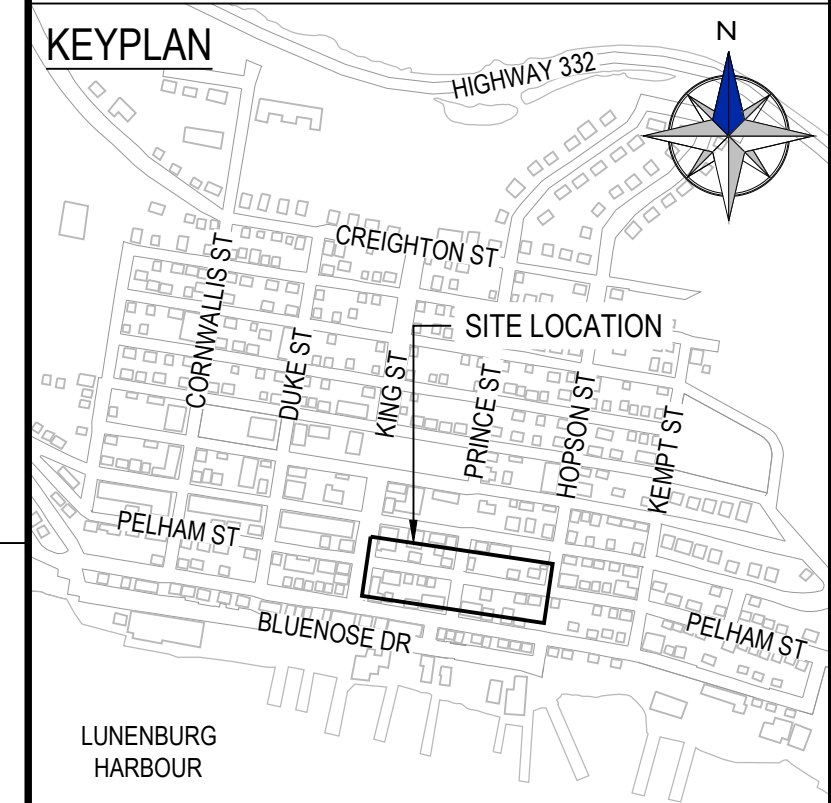
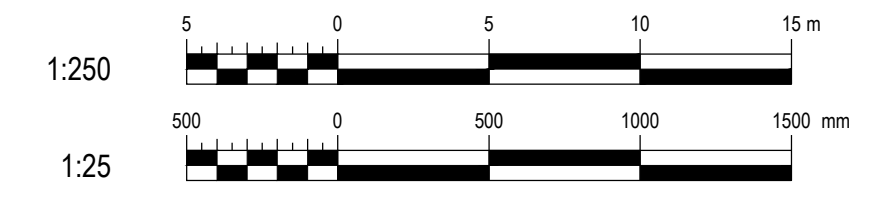
TITLE BLOCK @ 1:1 FULL SIZE = 117 x 17



1 PLAN - NEW SANITARY SEWER (STA. 0+000 TO 0+165)
SCALE: 1:250



2 PROFILE (STA. 0+000 TO 0+165)
SCALE HORIZONTAL: 1:250
SCALE VERTICAL: 1:25



- NOTES:**
- CONTRACTOR TO ALLOW FOR RECONNECTION OF UP TO 12 SANITARY LATERALS TO EDGE OF STREET RECONSTRUCTION EXTENTS. CONFIRM DWELLINGS TO BE CONNECTED WITH TOWN ENGINEER.
 - WATER AND SEWER LATERAL CROSSING LOCATIONS ARE UNKNOWN AND ARE NOT SHOWN ON THE PROFILE.
 - EXISTING WATER MAIN DEPTH IS NOT KNOWN AND SHOWN AS REPRESENTATIVE ONLY.

LEGEND

PLANIMETRY:

- BUILDING OUTLINE
- ASPHALT AREA
- CONCRETE AREA
- MUNICIPAL BOUNDARY
- TOP OF SLOPE
- DECORATIVE FENCE LINE
- TREE LINE
- TREE SINGLE
- PROTECTION BOLLARD SIGN

UTILITIES:

- WATER LINE
- STORM LINE
- SANITARY LINE
- COMBINED SEWER LINE
- UG STREETLIGHT LINE
- UG COMMUNICATIONS LINE
- UG GAS LINE
- VALVE BOX
- CURB STOP
- FIRE HYDRANT
- STORM MANHOLE
- STORM CATCH BASIN
- MONITORING WELL
- CLEANOUT
- COMBINED MANHOLE
- ELECT. POLE
- STREETLIGHT
- ELECT. JUNCTION BOX
- ELECT. MANHOLE

ABBREVIATIONS:

- EXIST. / ex EXISTING
- FIN. FINISH
- TYP. TYPICAL
- ELEV. ELEVATION
- INV. INVERT
- TEMP. TEMPORARY
- OH OVERHEAD
- UG UNDERGROUND
- CONC. CONCRETE
- SAN. SANITARY
- COMB. COMBINED
- MH MANHOLE
- CB CATCH BASIN

NOTE: EXISTING LINENWORK REPRESENTED BY GREYING OUT AND NEW OR REMOVED FEATURES BOLDED BLACK

1	RE-ISSUED FOR TENDER	JBC	2025-07-29
0	ISSUED FOR TENDER	JBC	2024-07-30
REV	DESCRIPTION	APP	DATE

PROJECT NAME:
PELHAM STREET RECONSTRUCTION

JOB LOCATION:
LUNenburg, NS

DRAWING TITLE:
PLAN AND PROFILE NEW SANITARY SEWER (STA. 0+000 TO 0+165)

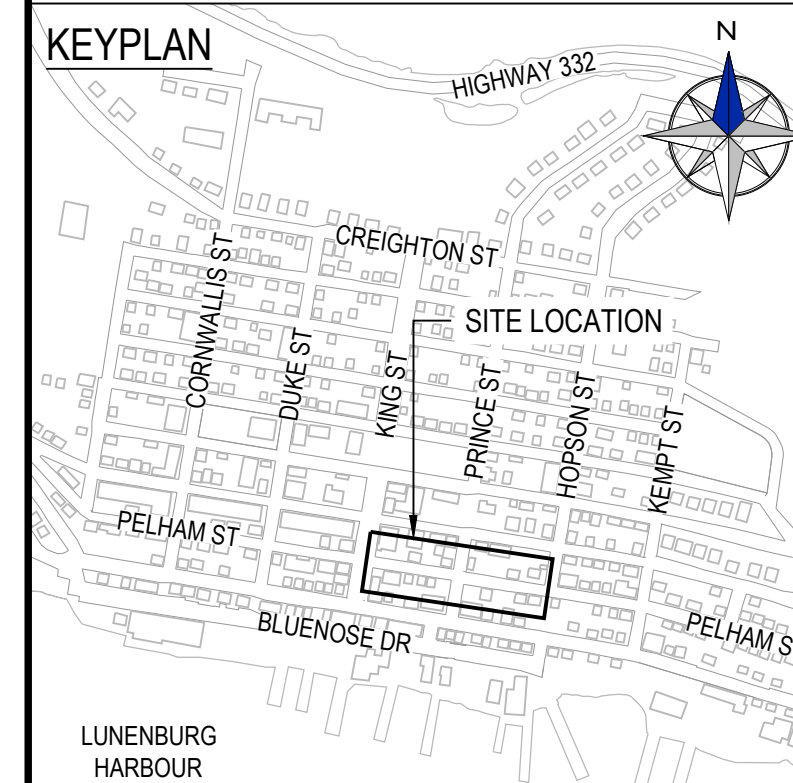
DWN BY: MMS CKD BY: ATN

DES BY: JBC SHT NO:

SCALE: 1:250

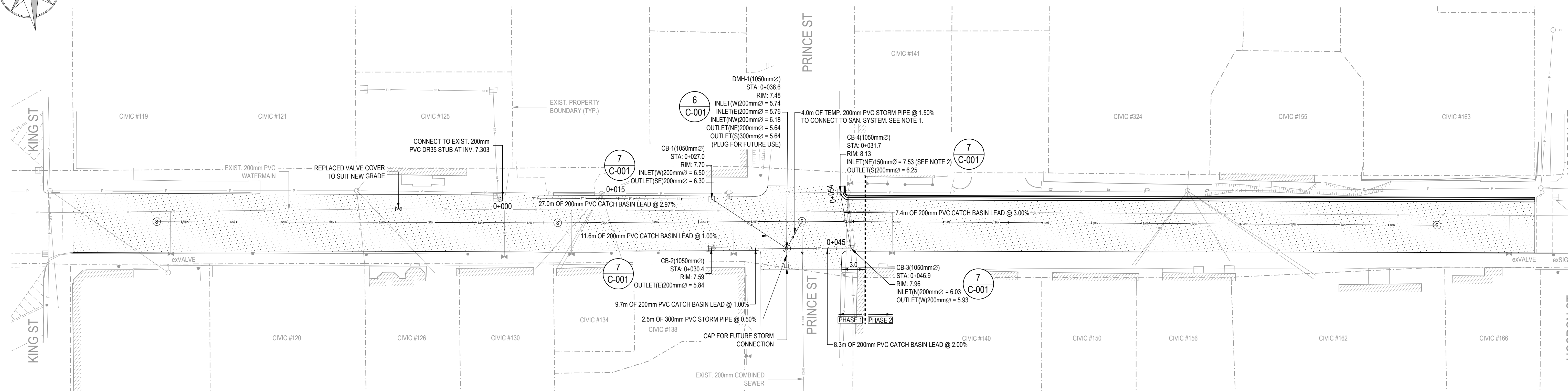
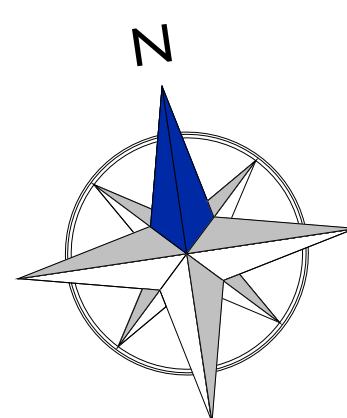
CLIENT JOB NO: EASTPOINT JOB NO: 322005
DRAWING NO: C-102 REV: 1

CLIENT NAME / LOGO:

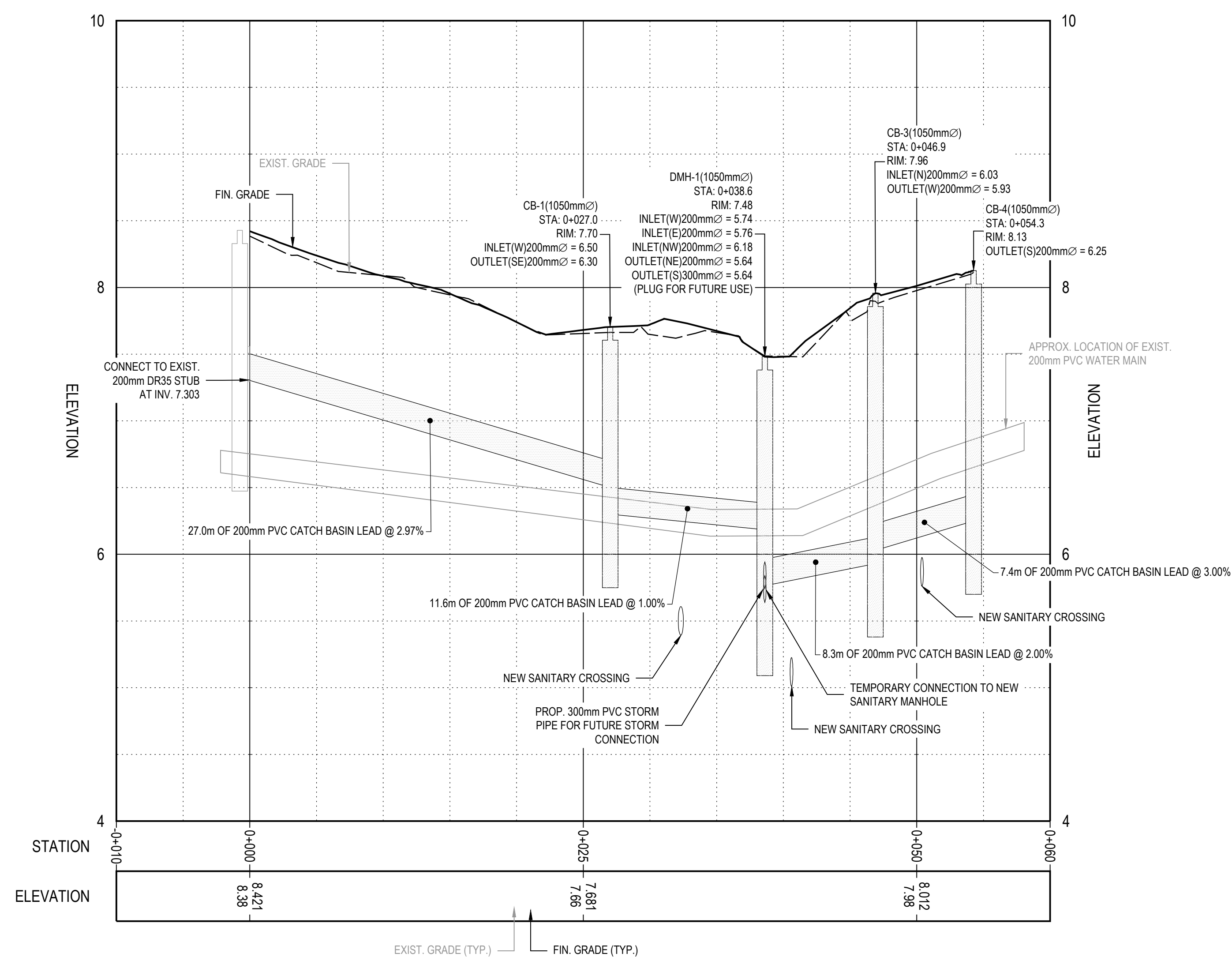


NOTES:

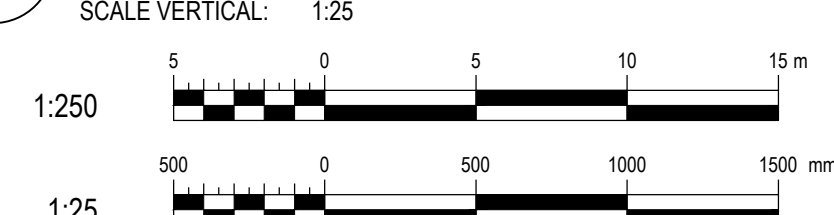
- THE EXISTING COMBINED SEWER IS BEING SEPARATED INTO INDEPENDENT STORM AND SANITARY SYSTEMS. AS NEW STORM IS BEING RAISED TO AVOID PIPE INTERFERENCES AND ALLOW FOR THE USE OF THE COMBINED SYSTEM UNTIL INDEPENDENT STORM INFRASTRUCTURE IS AVAILABLE DOWNSTREAM, ANY EXISTING HOUSE STORM LATERALS THAT ARE HIGHER THAN THE NEW STORM MAIN WILL NEED TO BE CONNECTED TO THE NEW SANITARY SYSTEM WHICH IS BEING REINSTATED TO MATCH THE EXISTING COMBINED SYSTEM'S INVERTS AND SLOPES.
- CORE DRILL AND CONNECT EXISTING PVC LATERAL TO NEW CATCH BASIN AT APPROX. ELEVATION INDICATED OR AS REQUIRED FOR POSITIVE DRAINAGE INTO THE CATCH BASIN.
- CONTRACTOR SHALL BE RESPONSIBLE FOR PROTECTING EXISTING INFRASTRUCTURE WHEN INSTALLING NEW CATCH BASINS AND SHALL MAKE GOOD ANY DAMAGES AT NO EXPENSE TO THE OWNER.
- WATER AND SEWER LATERAL CROSSING LOCATIONS ARE UNKNOWN AND ARE NOT SHOWN ON THE PROFILE.



1 PLAN - NEW STORM SEWER (STA. 0+000 TO 0+032)
C-103 SCALE: 1:250



2 PROFILE (STA. 0+000 TO 0+032)
C-103 SCALE HORIZONTAL: 1:250
SCALE VERTICAL: 1:25



LEGEND

PLANIMETRY:

- BUILDING OUTLINE
- ASPHALT AREA
- CONCRETE AREA
- MUNICIPAL BOUNDARY
- TOP OF SLOPE
- DECORATIVE FENCE LINE
- TREE LINE
- TREE SINGLE
- PROTECTION BOLLARD SIGN

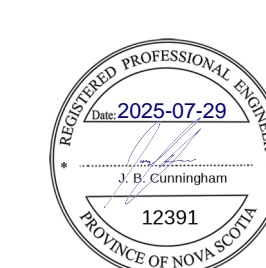
UTILITIES:

- WATER LINE
- STORM LINE
- SANITARY LINE
- COMBINED SEWER LINE
- UG STREETLIGHT LINE
- UG COMMUNICATIONS LINE
- UG GAS LINE
- VALVE BOX
- CURB STOP
- FIRE HYDRANT
- STORM MANHOLE
- STORM CATCH BASIN
- MONITORING WELL
- CLEANOUT
- COMBINED MANHOLE
- ELECT. POLE
- STREETLIGHT
- ELECT. JUNCTION BOX
- ELECT. MANHOLE

NOTE: EXISTING LINework REPRESENTED BY GREYING OUT AND NEW OR REMOVED FEATURES BOLDED BLACK

ABBREVIATIONS:

- EXIST. / ex EXISTING
- FIN FINISH
- TYP TYPICAL
- ELEV. ELEVATION
- INV. INVERT
- TEMP. TEMPORARY
- OH OVERHEAD
- UG UNDERGROUND
- CONC. CONCRETE
- SAN. SANITARY
- COMB. COMBINED
- MH MANHOLE
- CB CATCH BASIN



1	RE-ISSUED FOR TENDER	JBC	2025-07-29
0	ISSUED FOR TENDER	JBC	2024-07-30
REV	DESCRIPTION	APP	DATE

PROJECT NAME:
PELHAM STREET RECONSTRUCTION

JOB LOCATION:
LUNenburg, NS

DRAWING TITLE:
PLAN AND PROFILE NEW STORM SEWER (STA. 0+000 TO 0+032)

DWN BY: MMS CKD BY: ATN

DES BY: JBC SHT NO:

SCALE: 1:250

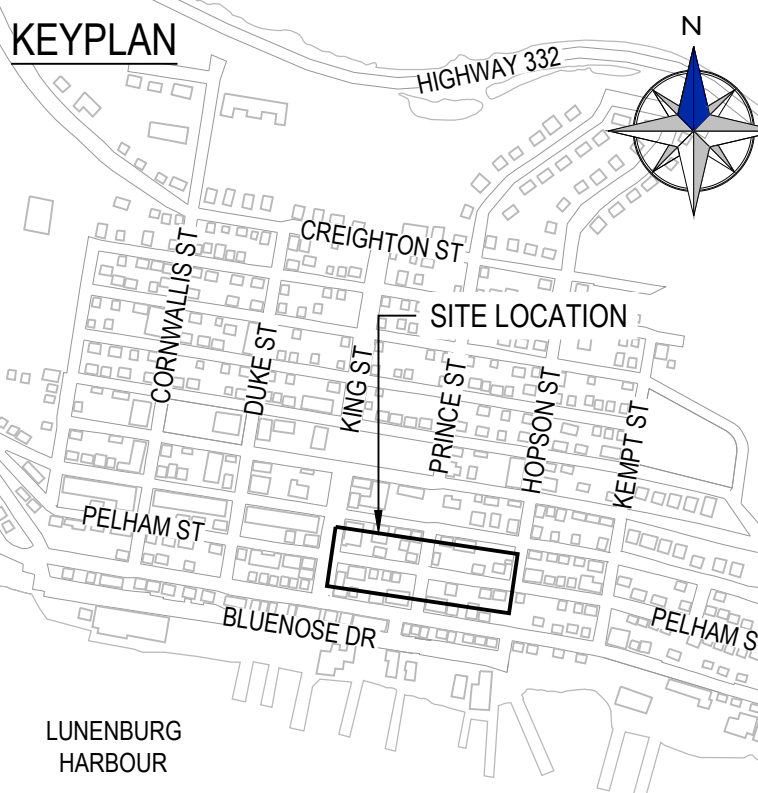
CLIENT JOB NO: EASTPOINT JOB NO: 322005

DRAWING NO: C-103 REV: 1

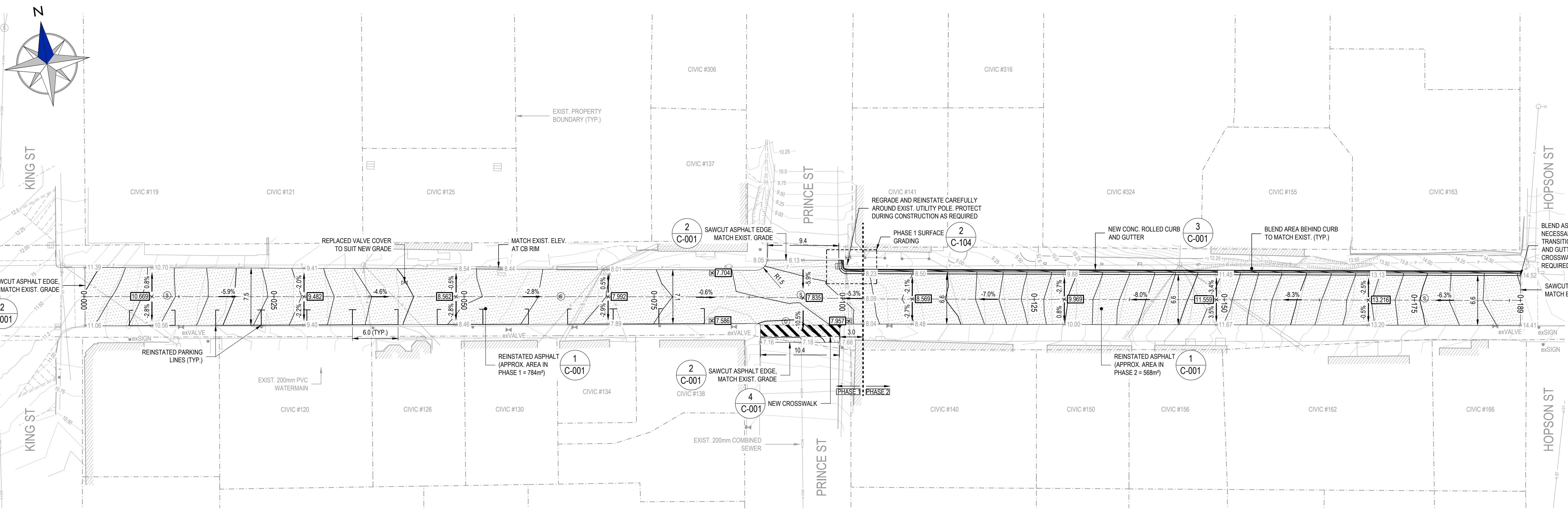
TITLE BLOCK @ 1:1 FULL SIZE = 117 x 17

20/04/2025 12:38:10 PM: M:\Users\jbc@eastpoint.ca\OneDrive\Documents\2025\Projects\2025\PELHAM STREET RECONSTRUCTION\DWG\C-103-1.dwg

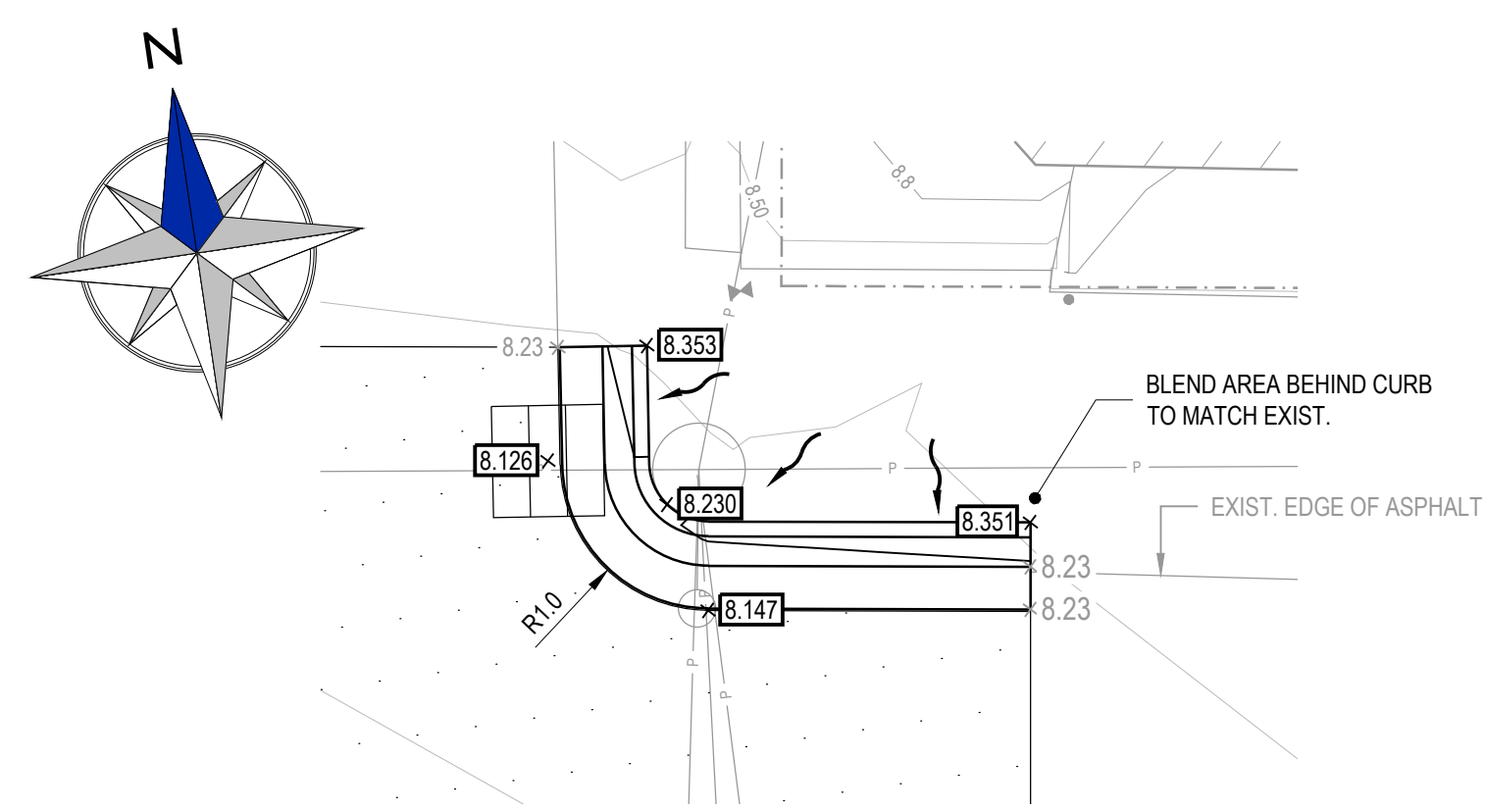
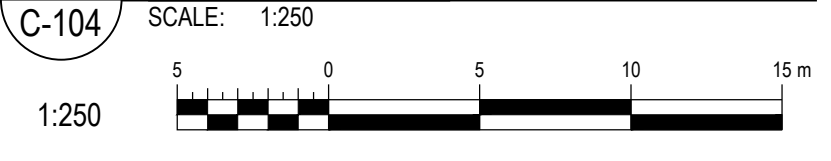
CLIENT NAME / LOGO:



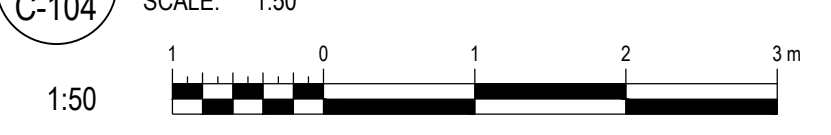
LUNENBURG HARBOUR



1 NEW SITE GRADING PLAN



2 PHASE 1 SURFACE GRADING



LEGEND

PLANIMETRY:

- BUILDING OUTLINE
- ASPHALT AREA
- CONCRETE AREA
- MUNICIPAL BOUNDARY
- TOP OF SLOPE
- DECORATIVE FENCE LINE
- TREE LINE
- TREE SINGLE
- PROTECTION BOLLARD SIGN

UTILITIES:

- WATER LINE
- STORM LINE
- SANITARY LINE
- COMBINED SEWER LINE
- UG STREETLIGHT LINE
- UG COMMUNICATIONS LINE
- UG GAS LINE
- VALVE BOX
- CURB STOP
- FIRE HYDRANT
- STORM MANHOLE
- STORM CATCH BASIN
- MONITORING WELL
- CLEANOUT
- COMBINED MANHOLE
- ELECT. POLE
- STREETLIGHT
- ELECT. JUNCTION BOX
- ELECT. MANHOLE

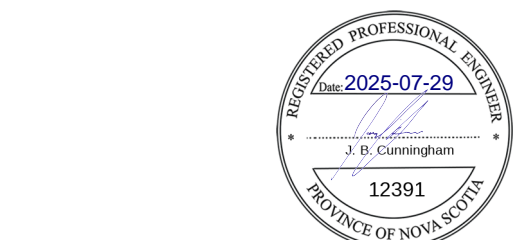
NOTE: EXISTING LINENWORK REPRESENTED BY GREYING OUT AND NEW OR REMOVED FEATURES BOLDED BLACK

ABBREVIATIONS:

- EXIST. / ex EXISTING
- FIN. FINISH
- TYP. TYPICAL
- ELEV. ELEVATION
- INV. INVERT
- TEMP. TEMPORARY
- OH OVERHEAD
- UG UNDERGROUND
- CONC. CONCRETE
- SAN. SANITARY
- COMB. COMBINED
- MH MANHOLE
- CB CATCH BASIN

GRADING LEGEND:

- EXIST. SPOT ELEVATION
- FINISH GRADE ELEVATION
- FINISH GRADE SLOPE
- BLENDED FINISHED GRADE



1	RE-ISSUED FOR TENDER	JBC	2025-07-29
0	ISSUED FOR TENDER	JBC	2024-07-30
REV	DESCRIPTION	APP	DATE

PROJECT NAME:
PELHAM STREET RECONSTRUCTION

JOB LOCATION:
LUNENBURG, NS

DRAWING TITLE:
NEW SITE GRADING PLAN

DWN BY: MMS CKD BY: ATN

DES BY: JBC SHT NO:

SCALE: 1:250
CLIENT JOB NO: EASTPOINT JOB NO: 322005

DRAWING NO: C-104 REV: 1

TITLE BLOCK @ 1:1 FULL SIZE = 11" x 17"

2024-08-01 10:25:19 AM: MMS: JBC: 1:250: Town of Lunenburg (2025-07-29) Pelham Street Reconstruction/Grading/CD/Rev. 04/25/2025, C-104.dwg